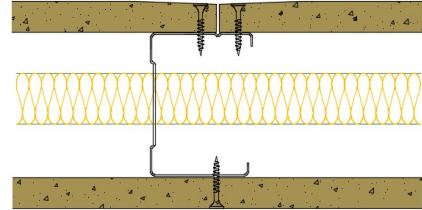


AS70-B-163(25) - SPEEDLINE System Data Sheet - Version V1 (24-10-23)

SPEEDLINE 70mm Acoustic 'C' Stud Partition
 @600mm Ctrs, with BG Gyproc 15mm DuraLine
 each side, 25mm APR



System Performance Breakdown

Fire Resistance:

BS476 Part 22:1987:

Test Ref & Date or Applied Ref & Report:

Max Height:

Thickness:

Duty Grade: BS 5234: Part 2:1992:

Sound Insulation:

60/60 Minutes (Integrity/Insulation).

BTC 17435F - BRE Report P102396-1011A

Refer to Speedline Specification Clause

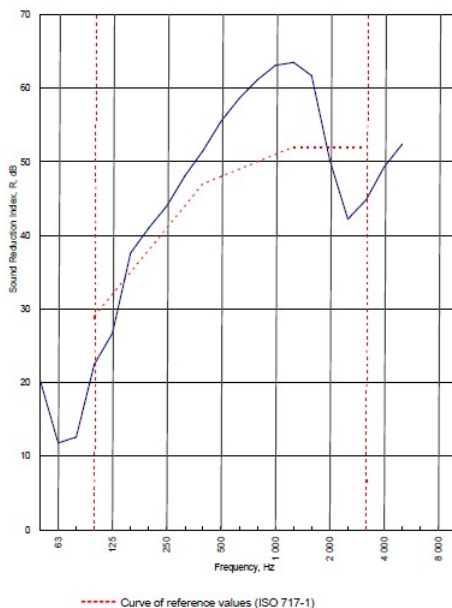
102 mm. (At Base Track, Excluding Finishes)

Severe - Annexes A-F

48 R_w dB, Date Tested or Assessed Against - 28/06/2010

Test Code:
H16909AA
Test Date:
28/06/2010

Freq. Hz	R dB
50	20.4
63	11.8
80	12.6
100	22.5
125	26.7
160	37.6
200	41.0
250	44.0
315	48.1
400	51.5
500	55.5
630	58.6
800	61.1
1 000	63.1
1 250	63.5
1 600	61.7
2 000	50.2
2 500	42.2
3 150	44.8
4 000	49.3
5 000	52.4
6 300	
8 000	
10 000	



Rating according to BS EN ISO 717-1:1997 **R_w (C;Ctr) = 48 (-3;-8) dB**
 Max dev. 9.8 dB at 2 500 Hz

Evaluation based on laboratory measurement results obtained by an engineering method:

$C_{50-3150}$ = -7 dB	$C_{50-2000}$ = -6 dB	$C_{100-5000}$ = -2 dB
$C_{10-50-3150}$ = -17 dB	$C_{10-50-2000}$ = -17 dB	$C_{10-100-5000}$ = -8 dB

TESTED AT ONE OF THE UKAS ACCREDITED LABORATORIES BELOW

B.T.C (H-Ref on Graph)

B.R.E

AIRO

S.R.L

Customer: Metsec plc Hepsec Division

BTC 16909A: Page 9 of 11

